



An overview of NEAR Video Conference

POLLING

The polling feature allows you to create single choice or multiple choice polling questions for your meetings

NEARBOARD

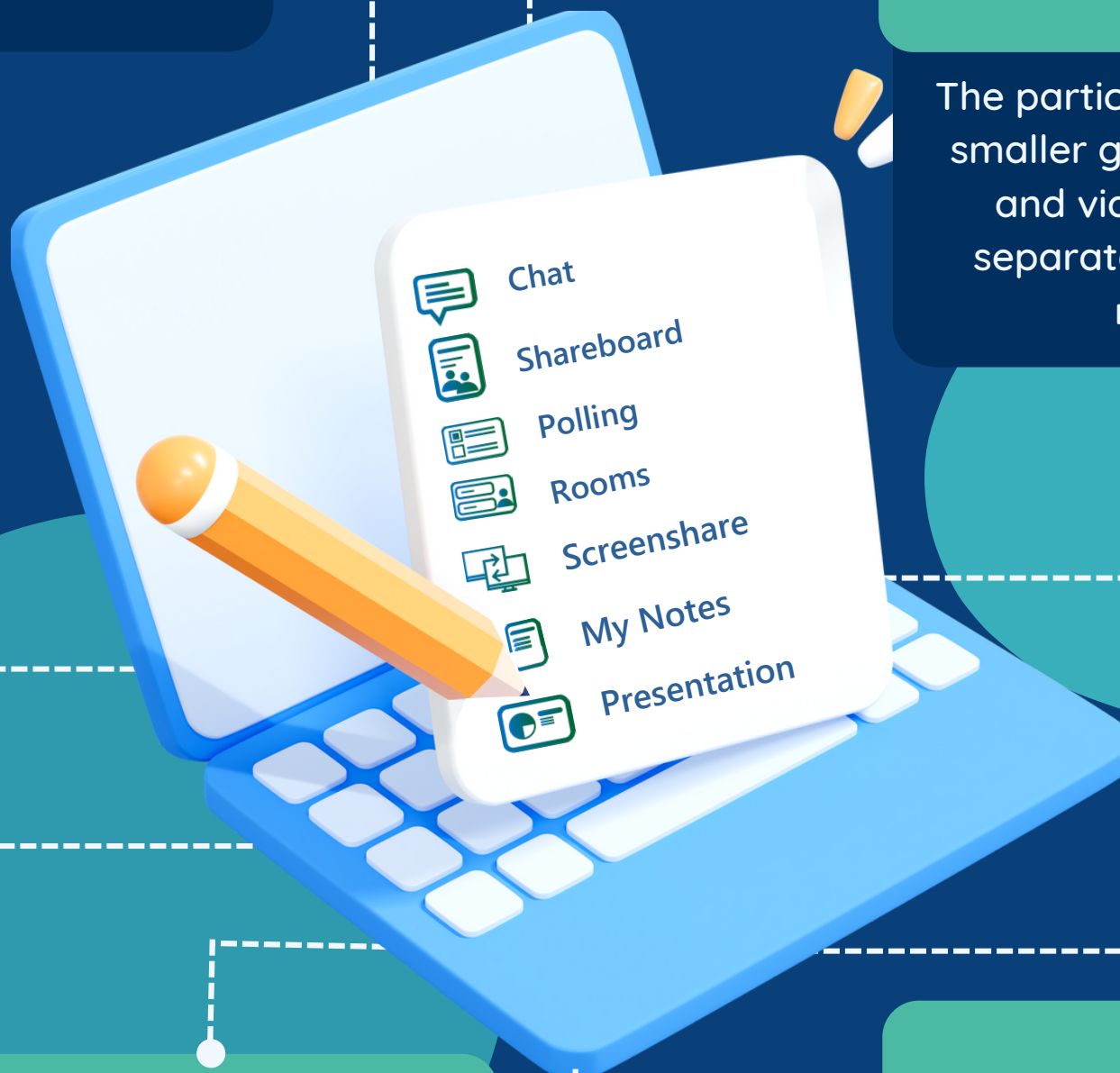
The NEAR board is the primary interactive element of Virtual Classroom. This is a whiteboard that allows you to upload files, draw shapes, type text, and do anything else you like.

CHAT

A NEAR chat feature enables you to send messages to all participants

ROOMS

The participants can meet in smaller groups, with audio and video completely separate from the main meeting.



SCREENSHARE

The Screenshot feature can be used to share a device's screen with another device or multiple devices at the same time.

SHAREDBOARD

Teachers and students can share notes through the Sharedboard in real time.

MY NOTES

The purpose of "My notes" is to take down the points discussed during the meeting.

PRESENTATION

In videoconferencing, the host/presenter can present documents using the Manage presentation feature